

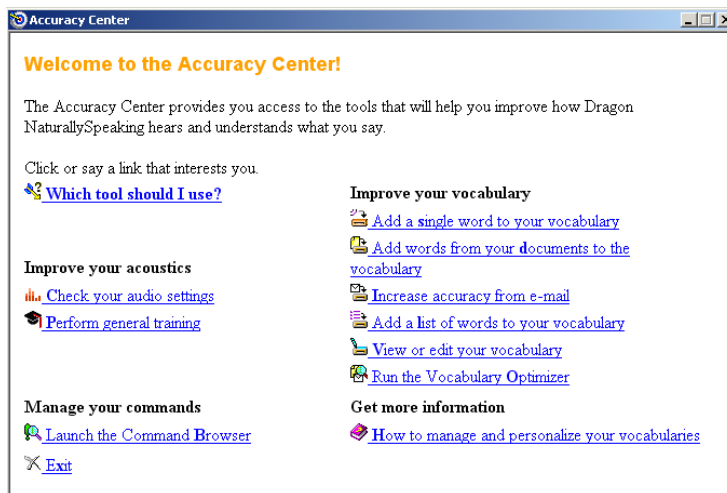
The Place Every User Should Know About In Dragon: Dragon NaturallySpeaking's Accuracy Center.

There are many tools and utilities inside of Dragon NaturallySpeaking that are designed to help you get the most from the software. Each one of them can be called individually by verbal command, or through the banal act of clicking the mouse. In any case, these tools range from testing your microphone to running optimization tools for accuracy. However, without knowing where these tools are, or even what to say to get to them, what does a user do in order to access these important functions inside of Dragon NaturallySpeaking? Easy! Use Dragon NaturallySpeaking's Accuracy Center.

The quickest way to find the Accuracy Center is to turn Dragon's microphone on and simply say "Open Accuracy Center.". You can also use your mouse and click on the 'Tools' menu on the Dragonbar, then choose 'Accuracy Center' as in the picture below:



The Accuracy Center appears, and displays its many tools for the user.



○ | Each tool and utility can be called individually by verbal command, or through the simple act of clicking the mouse.

○ | By clicking or saying the question links that the Accuracy Assistant presents, you will be offered many direct answers and places to go to get your problem solved in a logical and orderly fashion.

Dragon NaturallySpeaking's Accuracy Center is categorized for specific sorts of jobs to help you improve on the already-phenomenal accuracy that the current product has right out of the box. The four main categories include:

- Improving your Acoustics
- Managing your Commands
- Improving your Vocabulary
- Getting more information about managing and personalizing vocabularies.

All of this capability may be a bit confusing to the uninitiated, so start right from the top and click or say 'Which tool should I use?'

The 'Which Tool Should I Use?' link opens Dragon's Accuracy Assistant which presents you with several questions. These questions are designed to help you pick the right tool to use. For instance, you might be having trouble remembering what commands to say or getting frustrated when you say one thing, and Dragon NaturallySpeaking types something different. By clicking or saying the question links that the Accuracy Assistant presents, you will be offered many direct answers and places to go to get your problem solved in a logical and orderly fashion.

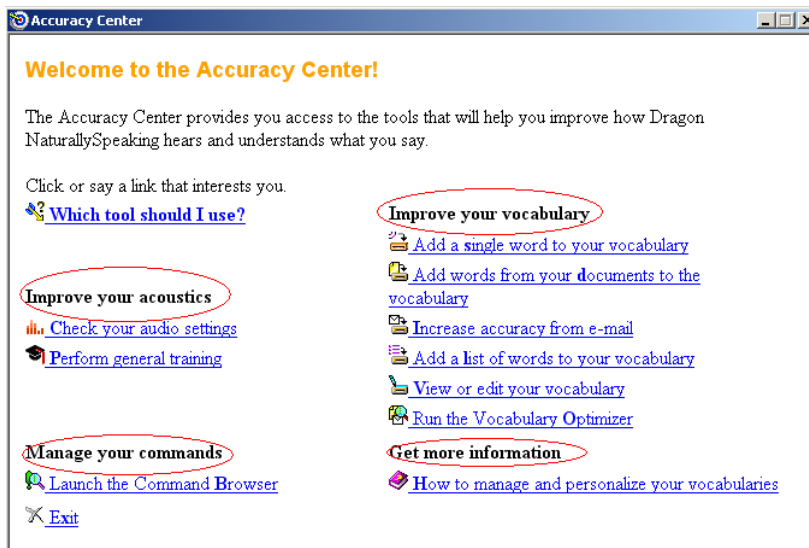
For many basic Dragon issues that you may have, the Accuracy Assistant's questions, coupled with their direct answers, can get most users back on track, making you productive in no time flat. At the same time, you may want to use a specific tool. Therefore there are additional direct links that can be addressed (circled in red below). These other categories are:

- Improve your acoustics
- Manage your commands
- Improve your vocabulary

○ | Speaking of the Audio Setup Wizard, this tool comes in handy to run if you've gotten that new microphone.

○ | The second link – Perform General Training – takes you into the various story scripts you can read.

These categories are there to steer you directly to help with a particular issue at hand.

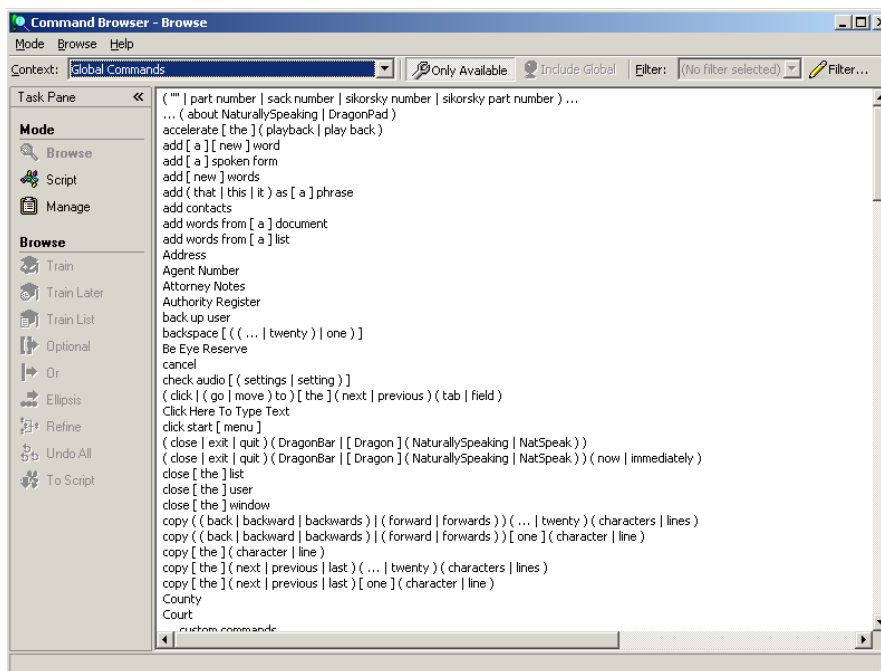


Improve your Acoustics:

If your user profile is getting a little 'hard of hearing' you may just need a quick run of the 'Check your audio settings' which starts the 'Audio Setup Wizard' utility to tune your microphone. Speaking of the Audio Setup Wizard, this tool comes in handy to run if you've gotten that new microphone. Second, this tool is good to run if something is not right in the office; you are being serenaded with jackhammers outside your office, or today's the day you've gotten a nose cold and sound different. The second link – Perform General Training – takes you into the various story scripts you can read. If you've read one story in your initial training, or you created a user without training (available in Version 9 Only!) then reading a second story might be key to getting the accuracy you're looking to achieve.

Manage your commands:

If you click or say 'Launch the Command Browser', Dragon will open its Command Browser window. Here's a view of the Command Browser.



The Command Browser will help you locate and train commands already in the system, as well as create new commands, modify existing commands, import or export commands, and many other functions as well. For example, you might be trying to say a command or commands that your colleagues are using, and Dragon isn't responding. This is the place to see if you have the commands. You can import them from your colleague, or you can train a particular command phrase to get Dragon to recognize them (remember the hard of hearing idea above?). One thing about Dragon NaturallySpeaking's Command Browser is that it comes with excellent help files to get you back on track so you'll spend less time trying to fix something and more time dictating!

Improving Your Vocabulary:

If you have other accuracy issues with Dragon you may wish to look at this category of links. You may have already taken a look at the Dragonbar 'Words' menu to see other quick tools, but here in the Accuracy Center is where Dragon keeps its real power tool set! You can add a single word and train its pronunciation here, or add a specific list of words. You can have Dragon analyze and find new words from a group of documents or from your email software. If you want, you can work directly with Dragon NaturallySpeaking's Vocabulary Editor – where all words + pronunciations + other modifiable word properties are located. The last link – "Run the vocabulary optimizer" might be familiar since you should have seen it when you created your user profile. This tool does a combination job of looking into your 'My Documents' and 'Sent' folder of your email. You might consider making sure you've groomed your 'My Documents' folder a bit in advance – since many times the 'My Documents' folder contains documents and files from other people and not just you. That way you know Dragon's Vocabulary Optimizer is analyzing your writing style and not others as well! In any case, don't worry; the Vocabulary Optimizer allows you to check for either documents, email, or both!

The Last Category: Get More Information.

This last Accuracy Center link takes you directly to help files concerning what a vocabulary is to Dragon NaturallySpeaking. You'll find out about definitions on Vocabulary Types, Size, and advanced topics concerning using different speech models that fit your computer, types of speakers using Dragon, and acoustic models (statistical representations of sounds) that make up the words Dragon is listening for. If your inner 'dragon gear-head' starts calling you, here's a good place to learn about how and why Dragon creates a particular type of user profile.

Summary

Sometimes you might need a little help with Dragon NaturallySpeaking. When that time comes the Accuracy Center is a wonderful central location for Dragon users to help themselves in many situations arising in day-to-day use. If you know where to go and get the various utilities peppered throughout Dragon NaturallySpeaking then kudos! You're getting better with your familiarity with Dragon. But for most of us mere mortals, the Accuracy Center is the simplest place to find all the tools we need to get the most from our copy of Dragon NaturallySpeaking. I use Dragon NaturallySpeaking every day to get my work done, and so should you.

John Ingram
Sales Engineer – Productivity Applications Division
Nuance Communications, Inc.

○ | One thing about Dragon NaturallySpeaking's Command Browser is that it comes with excellent help files to get you back on track so you'll spend less time trying to fix something and more time dictating!

○ | When that time comes the Accuracy Center is a wonderful central location for Dragon users to help themselves in many situations arising in day-to-day use.